

RSG PRO

Installation and Setup v2



Table of Contents

ITEMS INCLUDED.....1

MINIMUM PC REQUIREMENTS.....1

SPACE REQUIREMENTS.....1

POWER REQUIREMENTS..... 2

LIGHTING..... 2

SPIN LOGIC™.....2

OBTAINING CLUB DATA.....2

HANGING AND SETBACK.....3

INTERNET CONNECTION.....6

CREATING YOUR RSG CLUB ACCOUNT.....8

INSTALLING RSG CLUB SOFTWARE.....9

INSTALLING RSG PRO SOFTWARE.....11

INITIAL 3BALL SETUP..... 12

ITEMS INCLUDED

- RSG PRO simulator
- RSG PRO base subscription activation card
- 3 sample golf balls
- 8 Black BirTees
- Power cord (6ft)
- Ethernet cable (12 meters)
- On/Off remote switch
- Club data reflective stickers
- 3ball jig

MINIMUM PC REQUIREMENTS

- Windows® 11 64 bit
- Intel Core i5 Quad-Core S Mode disabled
- Dedicated GPU (Graphics Card): OpenGL 4.6 compatible card with 4GB GDDR5 RAM and latest Video Drivers (no more than 6 months old)
- 6GB Hard Disk Drive free storage space
- 16GB RAM (Memory)
- Persistent and reliable internet connection of 10 Mbps

SPACE REQUIREMENTS

- The back of your impact screen should be at least 1 foot away from any wall or object on the wall, to avoid early wear and screen damage.
- The distance from your preferred tee location to the screen should be between 8-10 feet.
 - This distance does not affect the ball tracking for your simulator. A tee location closer than 8 feet may feel too close for some golfers. A tee location further than 10 feet has an increased risk of stray shots missing the side walls of the enclosure.
- It is recommended to ensure you have sufficient space to comfortably and safely swing your longest club before you commit to the preferred tee location. A good rule of thumb is a 7ft radius around the ball for both right and left handed golfers. Check both the wall behind you as well as the ceiling above.

POWER REQUIREMENTS

- Internal power supply handles 100V to 240V, suitable for international use.
- International installations may require a US adaptor.

LIGHTING

- Additional lighting is not required for RSG PRO. The red LED lights of the RSG PRO are sufficient to illuminate the ball. The LED lights will be visible for a second or two when initially powered. Once the system is armed by having RSG Club open, there should be 6 red LED lights on each side. The asymmetrical spacing of the lights, as shown below, is normal.



- Ambient lighting should not interfere with the RSG PRO, as the RSG PRO filters out most visible light.
 - Natural sunlight contains infrared light which will interfere with the camera tracking the ball. Use shades or curtains to block natural sunlight.

SPIN LOGIC™

- 3 Taylormade TP5 pix balls are included with your simulator. They are required for measured spin.
- Other balls can be used, however the spin will be estimated based on the club selection in the game.



OBTAINING CLUB DATA

- The RSG PRO measures the incoming club at the location of a retro-reflective club sticker placed on the top of the club. Club data includes:
 - Club Speed [MPH]
 - Club Path [degrees: In-Out, Out-In]
 - Vertical Attack [degrees: D=descending, A=ascending]
 - Face Impact [Toe, Center, Heel]
 - Face Angle [Open, Flush, Closed]
- Measurements are taken at the center of the club sticker. We recommend positioning the club sticker at the approximate center of the club face, or positioned above your desired sweet spot on the club face. Apply the club sticker on the top edge of irons. Take care not to wrap the sticker around the

top of the iron, especially narrow blades. The back of the sticker will extend off the back of the iron for best results.

- Club stickers, and club data, are not required for accurate ball data. Feel free to enjoy practice or your round of golf without the club stickers. Club stickers are made with a medium-light adhesive for easy removal from the golf club with minimal residue. Add the sticker to your club when you are interested in seeing the club data. Otherwise you can remove the stickers until club data is desired.



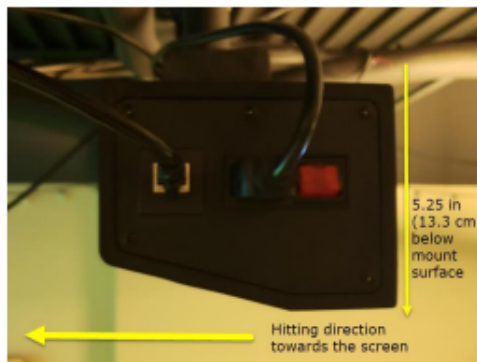
HANGING AND SETBACK

- RSG PRO will be mounted above the hitting area and will be slightly behind the golfer. Setback distance from the preferred tee location to the RSG PRO unit will vary depending upon the mounting height. The cameras in RSG PRO are angled at 15 degrees forward, so the tee location will be determined based upon the height and setback.

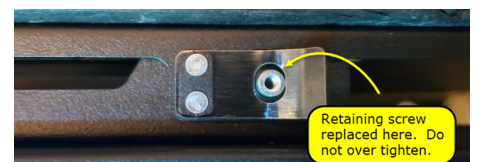
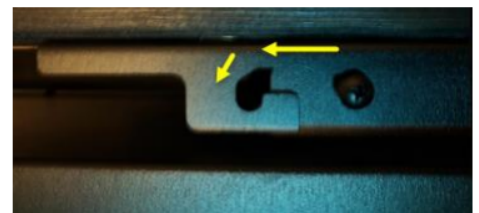


Height from the mounting surface to the floor			Setback distance from tee location to Galaxy		
feet	inch	cm	feet	inch	cm
10.5	126	320	2.8	33.8	85.8
10.25	123	312.4	2.7	33	83.7
10	120	304.8	2.7	32.2	81.7
9.75	117	297.2	2.6	31.4	79.6
9.5	114	289.6	2.5	30.5	77.6
9.25	111	281.9	2.5	29.7	75.5
9	108	274.3	2.4	28.9	73.5

- RSG PRO measures the ball in the first 30 inches of flight. The distance from your tee location to your screen is not relevant to the performance of your RSG PRO. We recommend 8 to 10 feet from the tee to the screen based upon the golfer's comfort level. Hitting closer than 8 feet may feel uncomfortably close for the golfer; further than 10 feet and stray shots may miss your bay.
- RSG PRO Orientation
 - RSG PRO should be mounted to a flat surface parallel to the plane of the projection screen. RSG PRO should be approximately level with respect to the ceiling and floor. It is not necessary to be perfectly level, as the 3-ball setup process will account for minor differences.
 - The angled part of the lower face of RSG PRO should be pointed toward the screen.
 - RSG PRO will extend approximately 5.25 inches below the mounting surface. Make sure there is sufficient clearance if the RSG PRO is mounted in front of a projector.

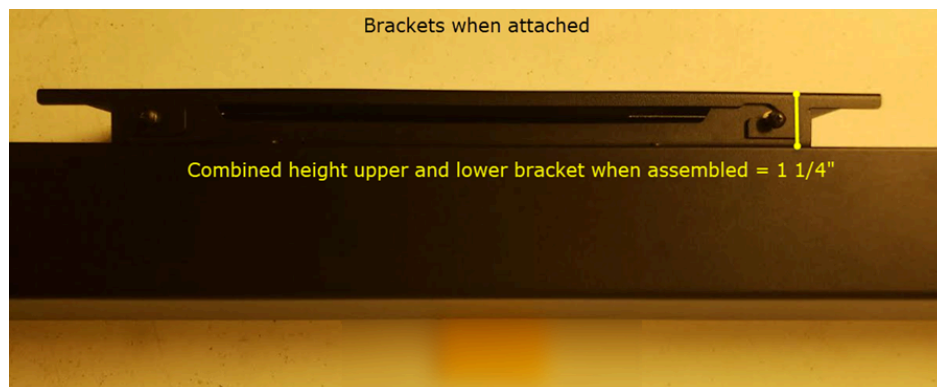
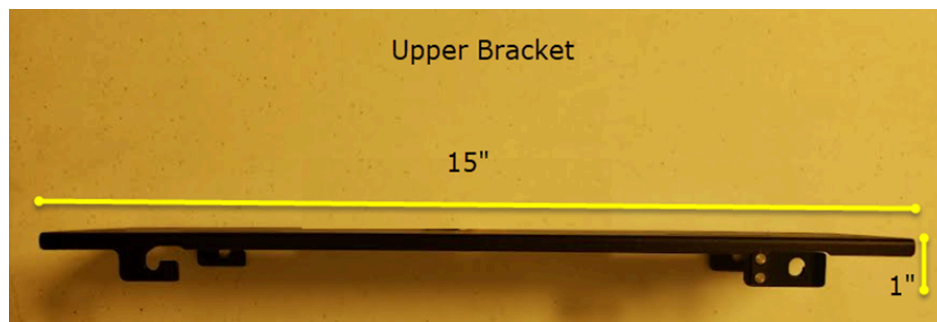
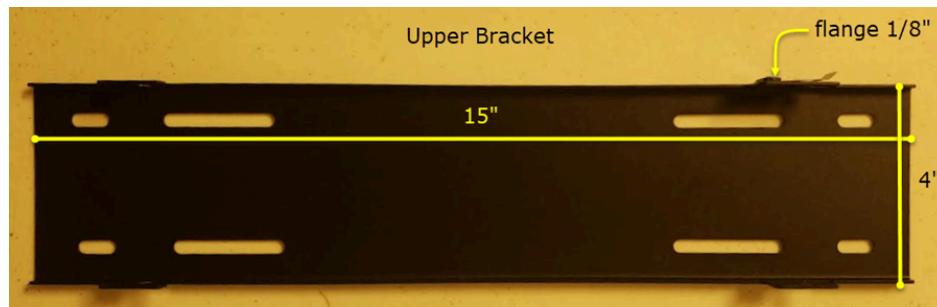


- Upper Mounting Bracket
 - Temporarily remove the retaining screw and gently pull the tab forward to allow the pins on the lower bracket to slide out of the slots on the upper bracket. Once the upper bracket is free, it can be easily positioned and secured to the ceiling.
 - Once the upper bracket is secured to the ceiling, gently position the RSG PRO in the center of the upper bracket and slide the pins from the lower bracket into the slots of the upper bracket. The pins should settle in the lower position of the slots and hold in place with gravity.
 - Restore the retaining screw to hold the metal flange in place. This will prohibit the



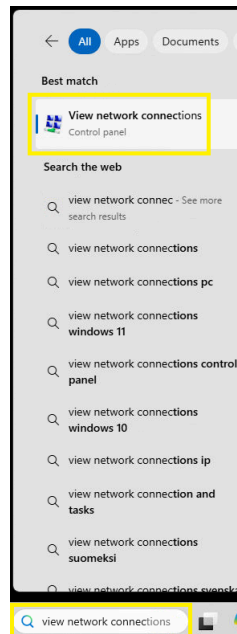
RSG PRO from dislodging from the upper bracket. Remove the retaining screw when you wish to remove the RSG PRO from the upper bracket.

- Dimensions

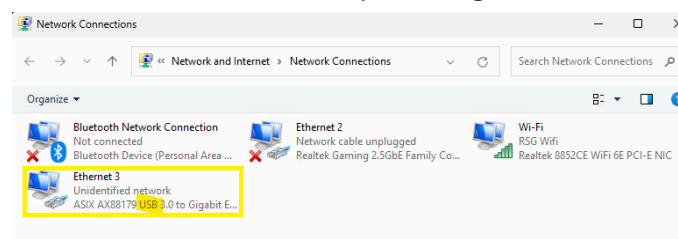


INTERNET CONNECTION

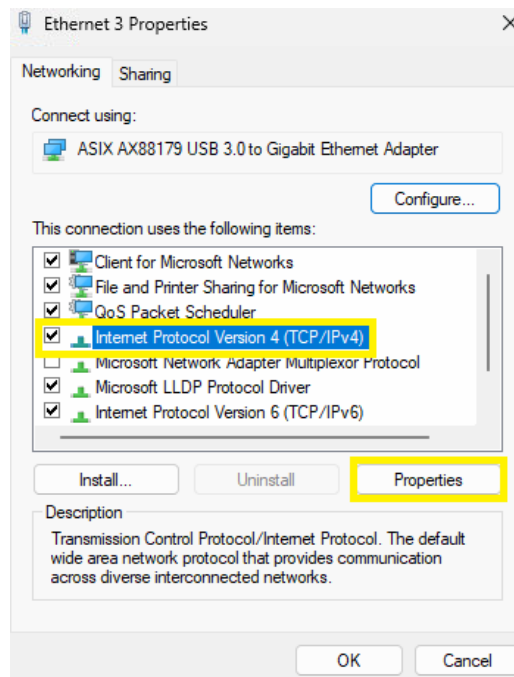
- RECOMMENDED WIFI CONNECTION: An internet connection is required to login and play. It is recommended that your computer be connected to the internet via WiFi, as the RSG PRO requires a direct wired connection using your computer's ethernet port. This direct connection allows shot data to be sent to your PC with very little shot latency. When you run the RSG PRO installer, the IP address of the port being used for the direct ethernet connection to the simulator will be set automatically.
- OPTIONAL USING A WIRED INTERNET CONNECTION: If a wireless internet connection is not an option and you only have **one** ethernet port available on your computer, you can use an ethernet to USB-A adapter (Windows and Linux compatible) for the RSG PRO's connection to your PC. Continue using your computer's native ethernet port for your wired internet connection
 - You will need to manually set the IP address of the port that is being created by the ethernet to USB-A adapter and used for the RSG PRO.
 - Open 'View Network Connections'



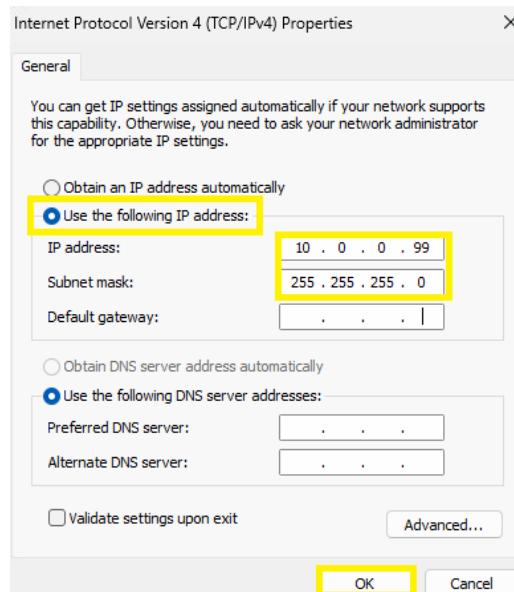
- Right click the ethernet port created by the USB adapter and select 'properties'. The ethernet adapter will typically have 'USB' in the name, as the sample image below.



- Select Internet Protocol Version 4 (TCP/IPv4) and click 'Properties'



- Select 'Use the following IP address' and set the IP address as shown below:
 - IP address: 10.0.0.99
 - Subnet mask: 255.255.255.0
 - Select 'OK'



CREATING YOUR RSG CLUB ACCOUNT

- Go to playredstakesgolf.com and click 'Sign up'

- Fill out the info on the sign up page and click 'send'.

Sign up

- After clicking send, an email will be sent to your email address with a link to activate your account. After that, you should be able to log into playredstakesgolf.com with your credentials and finish filling out your profile.

Your information

User info

Below you can set your game specific preferences.

Avatar

Click the avatar below to change your avatar.

Add image

Your address

Below you can enter your address.

Next step

- Once your profile is completed you will then want to click 'Go to dashboard'



Almost done

Well done

You've now completed the registration process. Now is a good time to download the latest game executable to your computer. You can do so with the button below, or just continue to the dashboard.

[Go to dashboard](#)[Download latest version](#)

- At the dashboard you will want to click 'Redeem code' and enter the code provided on the subscription activation card that was included in the box with your RSG PRO. This code provides access to the base level subscription of 10 courses and 3 ranges.

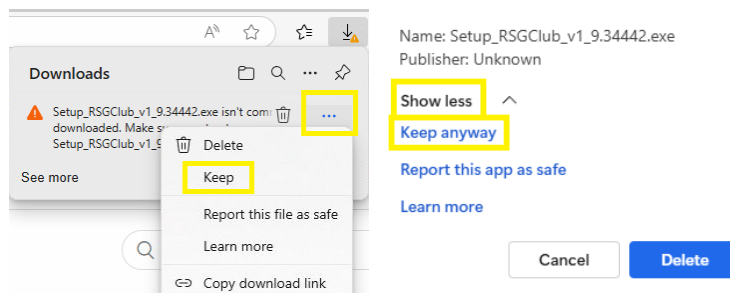
Activate hardware
Install and Log in to game client
with hardware installed
OR
If you have a redeemable code
[Redeem code](#)

Redeem your voucher
Enter your voucher code below to get more access
and/or receive additional items.

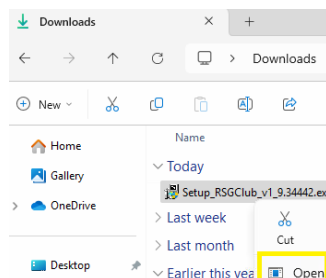
[Redeem code](#)

INSTALLING RSG CLUB SOFTWARE

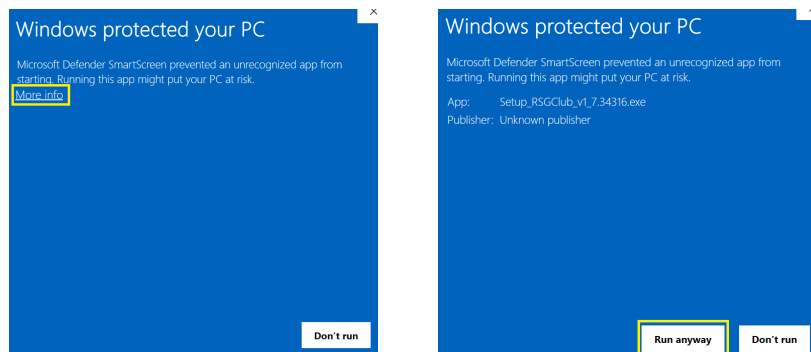
- Download the latest version of RSG Club by going to downloads.rsgolf.com and downloading the 'RSG Club Installer'.
 - If prompted by your web browser's security, you will want to keep the download.



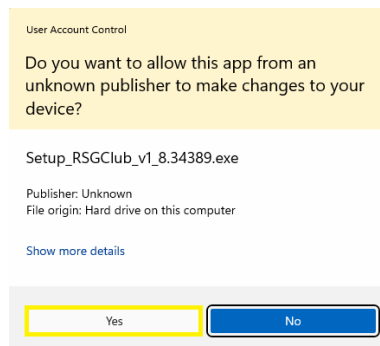
- After the download is complete, go to your downloads folder and then open the installer. The file name will start with 'Setup_RSGCub' followed by a version number (e.g. Setup_RSGClub_v1_2.3456).



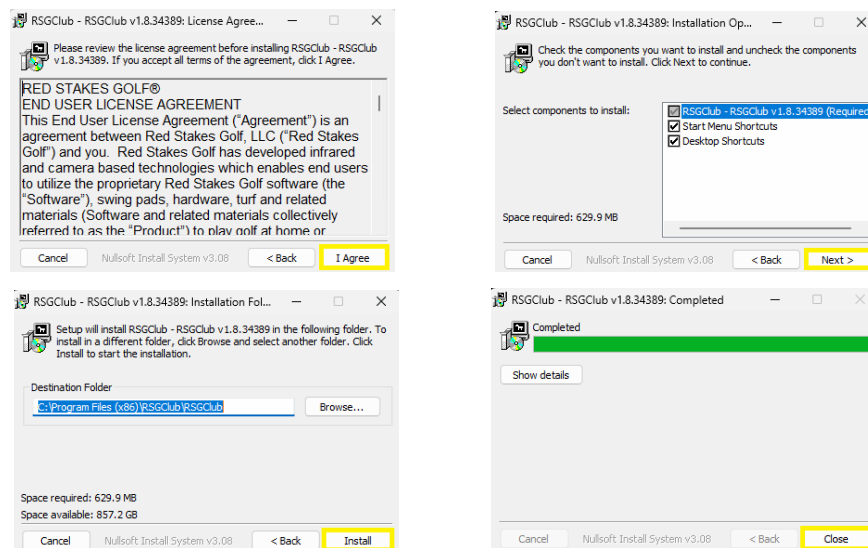
- If a windows protection prompt appears, click 'More info' and then 'Run anyway'.



- Click 'Yes' when prompted to allow this app to make changes.



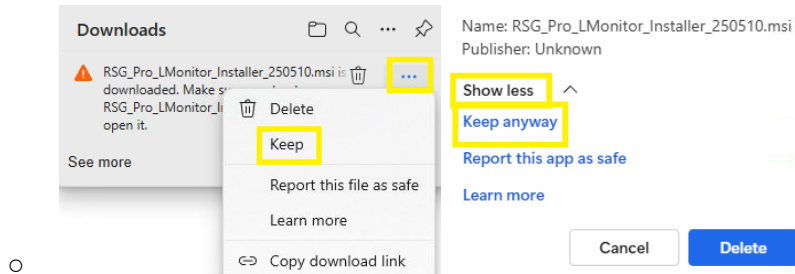
- Click 'I Agree' → 'Next' → 'Install' → 'Close'.



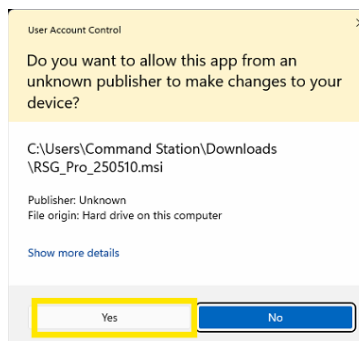
- You are now ready to install the RSG PRO software.

INSTALLING RSG PRO SOFTWARE

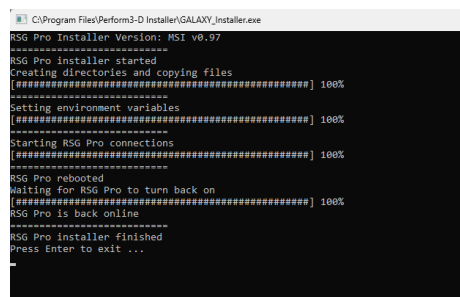
- !!!Before continuing, ensure that your RSG PRO is powered and wired to your computer!!!
- Download the latest version of the RSG PRO's firmware by going to downloads.rsgolf.com and downloading the 'RSG PRO LMonitor Installer'.
 - If prompted by your web browser's security, you will want to keep the download.



- Once the download is complete make sure your RSG PRO is powered and wired to your PC, then run the Windows installer that begins with 'RSG_Pro' followed by a version number (e.g. RSG_Pro_250510)..
- Select 'Yes' if prompted to allow this app to make changes to your device.



- When complete, you will see "Press the Enter to exit.." as shown below. Press the Enter key or close the window.



- You will now see three new shortcut icons on your desktop:



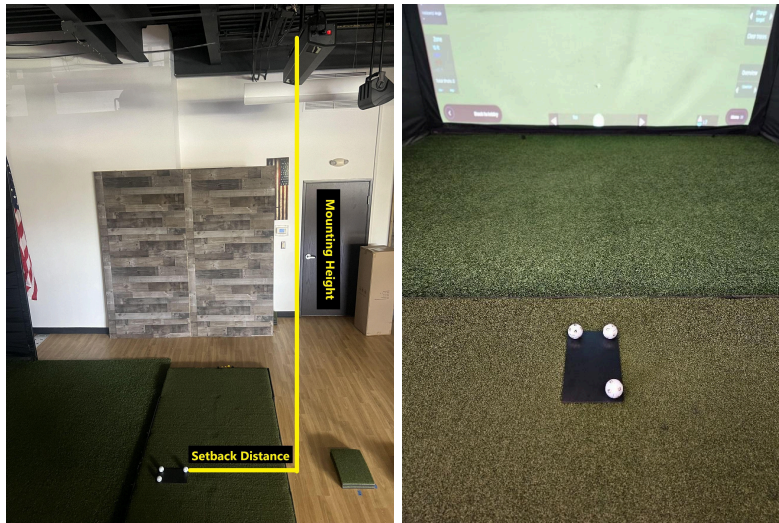
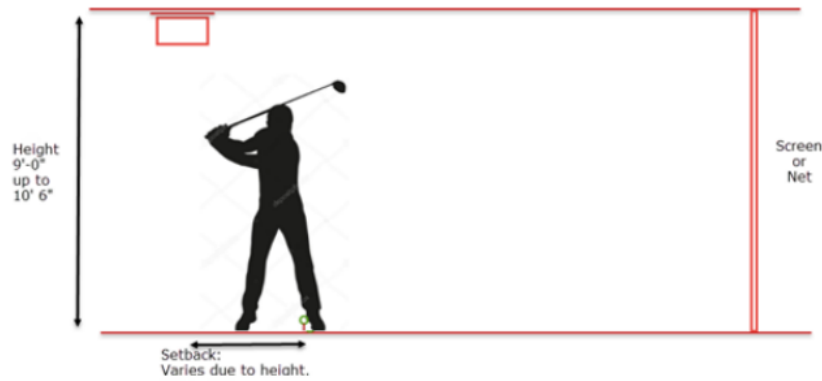
- Launch the 'Play RSGClub' game and select RSG PRO as your simulator hardware by going to Menu → Settings → System. Then exit the game.
- Verify the installation is complete by running the 'SystemCheck' program on the desktop.
 - Review the console output from SystemCheck. If everything has run correctly, it will look like the image to the right:
 - If you don't see success, then please contact technical support at support@rsgclub.com.

INITIAL 3BALL SETUP

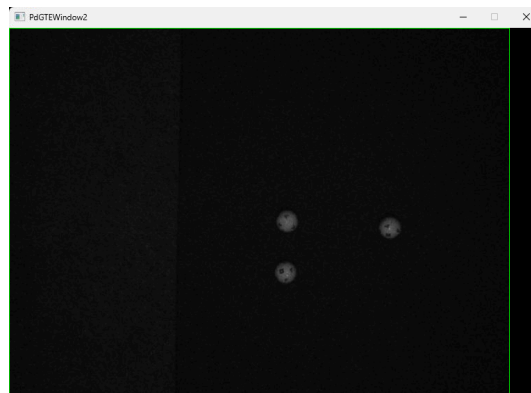
- The 3Ball Setup procedure requires placing three golf balls.
- Locate the 3ball jig (pictured to the right) to help set up your tee position, target line, and ground plane used for measuring the vertical and horizontal launch angles. The 3ball jig is a 1/8" thick plastic approximately 6"x10" with three holes for placing the golf balls.
- Ball 1 is your tee location and should be placed centered with and in front of your RSG PRO based on the mounting height (table below for reference). Do not put this ball on a tee, as you want it to be on the same ground plane as the other 2 balls for the initial 3ball setup.
- Balls 1 and 2 define your target line and are 8" apart from ball center to ball center. The target line should be aimed straight at your impact screen.
- Ball 3 completes the ground plane for vertical launch angle. The 3rd ball will be to the left side of the 2nd ball. These balls are 4" apart from ball center to ball center.



Height from the mounting surface to the floor			Setback distance from tee location to Galaxy		
feet	inch	cm	feet	inch	cm
10.5	126	320	2.8	33.8	85.8
10.25	123	312.4	2.7	33	83.7
10	120	304.8	2.7	32.2	81.7
9.75	117	297.2	2.6	31.4	79.6
9.5	114	289.6	2.5	30.5	77.6
9.25	111	281.9	2.5	29.7	75.5
9	108	274.3	2.4	28.9	73.5



- Open the 'LMonitor' program. This will open two windows: a graphic window (PdGTEWindow2) and a console window.
- With the graphic window selected, activate the live camera by pressing '9' on your keyboard. Toggle between both cameras using the '1' and '2' keys on your keyboard. The camera shown after pressing '2' takes about 20 seconds to wake up and display a live image. Ensure the balls resemble the below image and there are no other balls in the simulator's field of view.



- TIP: If the image of both cameras are noticeably different, you want the average location of balls 1 and 2 to be centered vertically.
- With the graphic window selected, press the 'x' key on your keyboard to complete the 3ball setup.
 - When you see SUCCESS appear on the console window, then the 3ball setup is complete. Close LMonitor.

```
SUCCESS
setup complete, all camera config buffers re-flashed...
cmdSetup DONE 3Ball platform 41

WARNING: Setup DONE -- Files saved!

WARNING: Setup SUCCESS -- Configuration files saved!
```

- If you don't see success or have any questions, please contact technical support at support@rsgclub.com.
- You are now ready to launch Play RSGClub and start using your RSG PRO!